

FSI/314C

To: Director of Fire Services  
(Attn: Building Improvement Division) \* 1 / 2

Fire Service Installation Plans for  
\*Composite Building / Domestic Building at

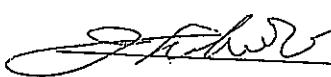

First Floor, Lot 4620 (Part) in DD 104, Ma Po Yuen Long  
Section 16 Planning Application No. A/YL-MP/372

This is to certify that the details and specifications of all installations shown on the attached fire service installation plans are as prescribed by the Fire Services Department under the Fire Safety (Buildings) Ordinance and in accordance with the relevant Rules and Codes of Practices, as may be applicable, e.g. :-

- \* ~~Rules of Loss-Prevention Council for Automatic Sprinkler Installation~~
- \* ~~Fire Offices' Committee for Automatic Sprinkler Installation (29th Edition)~~
- \* Code of Practice for Minimum Fire Service Installations and Equipment, Fire Services Department

Full Name of FSI \*Contractor/ Consultant : Wing Kai Engineering Co.

Signed :

Date : 19-7-2024

\* To be deleted as appropriate



**TO OPERATE FIRE HOSE REEL**  
**使用消防喉轆**

1. IN ALL FIRE EMERGENCY, FIRST AIDERS SHOULD IMMEDIATELY OPERATE THE FIRE HOSE REEL TO SUPPLY WATER TO THE FIRE SCENE.

2. THE OPERATOR SHOULD ALWAYS WEAR PROTECTIVE GEAR AND FOLLOW THE SAFETY PROCEDURES.

3. THE OPERATOR SHOULD ALWAYS WEAR PROTECTIVE GEAR AND FOLLOW THE SAFETY PROCEDURES.

4. THE OPERATOR SHOULD ALWAYS WEAR PROTECTIVE GEAR AND FOLLOW THE SAFETY PROCEDURES.

5. THE OPERATOR SHOULD ALWAYS WEAR PROTECTIVE GEAR AND FOLLOW THE SAFETY PROCEDURES.

6. THE OPERATOR SHOULD ALWAYS WEAR PROTECTIVE GEAR AND FOLLOW THE SAFETY PROCEDURES.

7. THE OPERATOR SHOULD ALWAYS WEAR PROTECTIVE GEAR AND FOLLOW THE SAFETY PROCEDURES.

8. THE OPERATOR SHOULD ALWAYS WEAR PROTECTIVE GEAR AND FOLLOW THE SAFETY PROCEDURES.

9. THE OPERATOR SHOULD ALWAYS WEAR PROTECTIVE GEAR AND FOLLOW THE SAFETY PROCEDURES.

10. THE OPERATOR SHOULD ALWAYS WEAR PROTECTIVE GEAR AND FOLLOW THE SAFETY PROCEDURES.

11. THE OPERATOR SHOULD ALWAYS WEAR PROTECTIVE GEAR AND FOLLOW THE SAFETY PROCEDURES.

12. THE OPERATOR SHOULD ALWAYS WEAR PROTECTIVE GEAR AND FOLLOW THE SAFETY PROCEDURES.

13. THE OPERATOR SHOULD ALWAYS WEAR PROTECTIVE GEAR AND FOLLOW THE SAFETY PROCEDURES.

14. THE OPERATOR SHOULD ALWAYS WEAR PROTECTIVE GEAR AND FOLLOW THE SAFETY PROCEDURES.

15. THE OPERATOR SHOULD ALWAYS WEAR PROTECTIVE GEAR AND FOLLOW THE SAFETY PROCEDURES.

16. THE OPERATOR SHOULD ALWAYS WEAR PROTECTIVE GEAR AND FOLLOW THE SAFETY PROCEDURES.

17. THE OPERATOR SHOULD ALWAYS WEAR PROTECTIVE GEAR AND FOLLOW THE SAFETY PROCEDURES.

18. THE OPERATOR SHOULD ALWAYS WEAR PROTECTIVE GEAR AND FOLLOW THE SAFETY PROCEDURES.

19. THE OPERATOR SHOULD ALWAYS WEAR PROTECTIVE GEAR AND FOLLOW THE SAFETY PROCEDURES.

20. THE OPERATOR SHOULD ALWAYS WEAR PROTECTIVE GEAR AND FOLLOW THE SAFETY PROCEDURES.

21. THE OPERATOR SHOULD ALWAYS WEAR PROTECTIVE GEAR AND FOLLOW THE SAFETY PROCEDURES.

22. THE OPERATOR SHOULD ALWAYS WEAR PROTECTIVE GEAR AND FOLLOW THE SAFETY PROCEDURES.

23. THE OPERATOR SHOULD ALWAYS WEAR PROTECTIVE GEAR AND FOLLOW THE SAFETY PROCEDURES.

24. THE OPERATOR SHOULD ALWAYS WEAR PROTECTIVE GEAR AND FOLLOW THE SAFETY PROCEDURES.

25. THE OPERATOR SHOULD ALWAYS WEAR PROTECTIVE GEAR AND FOLLOW THE SAFETY PROCEDURES.

26. THE OPERATOR SHOULD ALWAYS WEAR PROTECTIVE GEAR AND FOLLOW THE SAFETY PROCEDURES.

27. THE OPERATOR SHOULD ALWAYS WEAR PROTECTIVE GAR AND FOLLOW THE SAFETY PROCEDURES.

28. THE OPERATOR SHOULD ALWAYS WEAR PROTECTIVE GEAR AND FOLLOW THE SAFETY PROCEDURES.

29. THE OPERATOR SHOULD ALWAYS WEAR PROTECTIVE GEAR AND FOLLOW THE SAFETY PROCEDURES.

30. THE OPERATOR SHOULD ALWAYS WEAR PROTECTIVE GEAR AND FOLLOW THE SAFETY PROCEDURES.

31. THE OPERATOR SHOULD ALWAYS WEAR PROTECTIVE GEAR AND FOLLOW THE SAFETY PROCEDURES.

32. THE OPERATOR SHOULD ALWAYS WEAR PROTECTIVE GEAR AND FOLLOW THE SAFETY PROCEDURES.

33. THE OPERATOR SHOULD ALWAYS WEAR PROTECTIVE GEAR AND FOLLOW THE SAFETY PROCEDURES.

34. THE OPERATOR SHOULD ALWAYS WEAR PROTECTIVE GEAR AND FOLLOW THE SAFETY PROCEDURES.

35. THE OPERATOR SHOULD ALWAYS WEAR PROTECTIVE GEAR AND FOLLOW THE SAFETY PROCEDURES.

36. THE OPERATOR SHOULD ALWAYS WEAR PROTECTIVE GEAR AND FOLLOW THE SAFETY PROCEDURES.

37. THE OPERATOR SHOULD ALWAYS WEAR PROTECTIVE GEAR AND FOLLOW THE SAFETY PROCEDURES.

38. THE OPERATOR SHOULD ALWAYS WEAR PROTECTIVE GEAR AND FOLLOW THE SAFETY PROCEDURES.

39. THE OPERATOR SHOULD ALWAYS WEAR PROTECTIVE GEAR AND FOLLOW THE SAFETY PROCEDURES.

40. THE OPERATOR SHOULD ALWAYS WEAR PROTECTIVE GEAR AND FOLLOW THE SAFETY PROCEDURES.

41. THE OPERATOR SHOULD ALWAYS WEAR PROTECTIVE GEAR AND FOLLOW THE SAFETY PROCEDURES.

42. THE OPERATOR SHOULD ALWAYS WEAR PROTECTIVE GEAR AND FOLLOW THE SAFETY PROCEDURES.

43. THE OPERATOR SHOULD ALWAYS WEAR PROTECTIVE GEAR AND FOLLOW THE SAFETY PROCEDURES.

44. THE OPERATOR SHOULD ALWAYS WEAR PROTECTIVE GEAR AND FOLLOW THE SAFETY PROCEDURES.

45. THE OPERATOR SHOULD ALWAYS WEAR PROTECTIVE GEAR AND FOLLOW THE SAFETY PROCEDURES.

46. THE OPERATOR SHOULD ALWAYS WEAR PROTECTIVE GEAR AND FOLLOW THE SAFETY PROCEDURES.

47. THE OPERATOR SHOULD ALWAYS WEAR PROTECTIVE GEAR AND FOLLOW THE SAFETY PROCEDURES.

48. THE OPERATOR SHOULD ALWAYS WEAR PROTECTIVE GEAR AND FOLLOW THE SAFETY PROCEDURES.

49. THE OPERATOR SHOULD ALWAYS WEAR PROTECTIVE GEAR AND FOLLOW THE SAFETY PROCEDURES.

50. THE OPERATOR SHOULD ALWAYS WEAR PROTECTIVE GEAR AND FOLLOW THE SAFETY PROCEDURES.

51. THE OPERATOR SHOULD ALWAYS WEAR PROTECTIVE GEAR AND FOLLOW THE SAFETY PROCEDURES.

52. THE OPERATOR SHOULD ALWAYS WEAR PROTECTIVE GEAR AND FOLLOW THE SAFETY PROCEDURES.

53. THE OPERATOR SHOULD ALWAYS WEAR PROTECTIVE GEAR AND FOLLOW THE SAFETY PROCEDURES.

54. THE OPERATOR SHOULD ALWAYS WEAR PROTECTIVE GEAR AND FOLLOW THE SAFETY PROCEDURES.

55. THE OPERATOR SHOULD ALWAYS WEAR PROTECTIVE GEAR AND FOLLOW THE SAFETY PROCEDURES.

56. THE OPERATOR SHOULD ALWAYS WEAR PROTECTIVE GEAR AND FOLLOW THE SAFETY PROCEDURES.

57. THE OPERATOR SHOULD ALWAYS WEAR PROTECTIVE GEAR AND FOLLOW THE SAFETY PROCEDURES.

58. THE OPERATOR SHOULD ALWAYS WEAR PROTECTIVE GEAR AND FOLLOW THE SAFETY PROCEDURES.

59. THE OPERATOR SHOULD ALWAYS WEAR PROTECTIVE GEAR AND FOLLOW THE SAFETY PROCEDURES.

60. THE OPERATOR SHOULD ALWAYS WEAR PROTECTIVE GEAR AND FOLLOW THE SAFETY PROCEDURES.

61. THE OPERATOR SHOULD ALWAYS WEAR PROTECTIVE GEAR AND FOLLOW THE SAFETY PROCEDURES.

62. THE OPERATOR SHOULD ALWAYS WEAR PROTECTIVE GEAR AND FOLLOW THE SAFETY PROCEDURES.

63. THE OPERATOR SHOULD ALWAYS WEAR PROTECTIVE GEAR AND FOLLOW THE SAFETY PROCEDURES.

64. THE OPERATOR SHOULD ALWAYS WEAR PROTECTIVE GEAR AND FOLLOW THE SAFETY PROCEDURES.

65. THE OPERATOR SHOULD ALWAYS WEAR PROTECTIVE GEAR AND FOLLOW THE SAFETY PROCEDURES.

66. THE OPERATOR SHOULD ALWAYS WEAR PROTECTIVE GEAR AND FOLLOW THE SAFETY PROCEDURES.

67. THE OPERATOR SHOULD ALWAYS WEAR PROTECTIVE GEAR AND FOLLOW THE SAFETY PROCEDURES.

68. THE OPERATOR SHOULD ALWAYS WEAR PROTECTIVE GEAR AND FOLLOW THE SAFETY PROCEDURES.

69. THE OPERATOR SHOULD ALWAYS WEAR PROTECTIVE GEAR AND FOLLOW THE SAFETY PROCEDURES.

70. THE OPERATOR SHOULD ALWAYS WEAR PROTECTIVE GEAR AND FOLLOW THE SAFETY PROCEDURES.

71. THE OPERATOR SHOULD ALWAYS WEAR PROTECTIVE GEAR AND FOLLOW THE SAFETY PROCEDURES.

72. THE OPERATOR SHOULD ALWAYS WEAR PROTECTIVE GEAR AND FOLLOW THE SAFETY PROCEDURES.

73. THE OPERATOR SHOULD ALWAYS WEAR PROTECTIVE GEAR AND FOLLOW THE SAFETY PROCEDURES.

74. THE OPERATOR SHOULD ALWAYS WEAR PROTECTIVE GEAR AND FOLLOW THE SAFETY PROCEDURES.

75. THE OPERATOR SHOULD ALWAYS WEAR PROTECTIVE GEAR AND FOLLOW THE SAFETY PROCEDURES.

76. THE OPERATOR SHOULD ALWAYS WEAR PROTECTIVE GEAR AND FOLLOW THE SAFETY PROCEDURES.

77. THE OPERATOR SHOULD ALWAYS WEAR PROTECTIVE GEAR AND FOLLOW THE SAFETY PROCEDURES.

78. THE OPERATOR SHOULD ALWAYS WEAR PROTECTIVE GEAR AND FOLLOW THE SAFETY PROCEDURES.

79. THE OPERATOR SHOULD ALWAYS WEAR PROTECTIVE GEAR AND FOLLOW THE SAFETY PROCEDURES.

80. THE OPERATOR SHOULD ALWAYS WEAR PROTECTIVE GEAR AND FOLLOW THE SAFETY PROCEDURES.

81. THE OPERATOR SHOULD ALWAYS WEAR PROTECTIVE GEAR AND FOLLOW THE SAFETY PROCEDURES.

82. THE OPERATOR SHOULD ALWAYS WEAR PROTECTIVE GEAR AND FOLLOW THE SAFETY PROCEDURES.

83. THE OPERATOR SHOULD ALWAYS WEAR PROTECTIVE GEAR AND FOLLOW THE SAFETY PROCEDURES.

84. THE OPERATOR SHOULD ALWAYS WEAR PROTECTIVE GEAR AND FOLLOW THE SAFETY PROCEDURES.

85. THE OPERATOR SHOULD ALWAYS WEAR PROTECTIVE GEAR AND FOLLOW THE SAFETY PROCEDURES.

86. THE OPERATOR SHOULD ALWAYS WEAR PROTECTIVE GEAR AND FOLLOW THE SAFETY PROCEDURES.

87. THE OPERATOR SHOULD ALWAYS WEAR PROTECTIVE GEAR AND FOLLOW THE SAFETY PROCEDURES.

88. THE OPERATOR SHOULD ALWAYS WEAR PROTECTIVE GEAR AND FOLLOW THE SAFETY PROCEDURES.

89. THE OPERATOR SHOULD ALWAYS WEAR PROTECTIVE GEAR AND FOLLOW THE SAFETY PROCEDURES.

90. THE OPERATOR SHOULD ALWAYS WEAR PROTECTIVE GEAR AND FOLLOW THE SAFETY PROCEDURES.

91. THE OPERATOR SHOULD ALWAYS WEAR PROTECTIVE GEAR AND FOLLOW THE SAFETY PROCEDURES.

92. THE OPERATOR SHOULD ALWAYS WEAR PROTECTIVE GEAR AND FOLLOW THE SAFETY PROCEDURES.

93. THE OPERATOR SHOULD ALWAYS WEAR PROTECTIVE GEAR AND FOLLOW THE SAFETY PROCEDURES.

94. THE OPERATOR SHOULD ALWAYS WEAR PROTECTIVE GEAR AND FOLLOW THE SAFETY PROCEDURES.

95. THE OPERATOR SHOULD ALWAYS WEAR PROTECTIVE GEAR AND FOLLOW THE SAFETY PROCEDURES.

96. THE OPERATOR SHOULD ALWAYS WEAR PROTECTIVE GEAR AND FOLLOW THE SAFETY PROCEDURES.

97. THE OPERATOR SHOULD ALWAYS WEAR PROTECTIVE GEAR AND FOLLOW THE SAFETY PROCEDURES.

98. THE OPERATOR SHOULD ALWAYS WEAR PROTECTIVE GEAR AND FOLLOW THE SAFETY PROCEDURES.

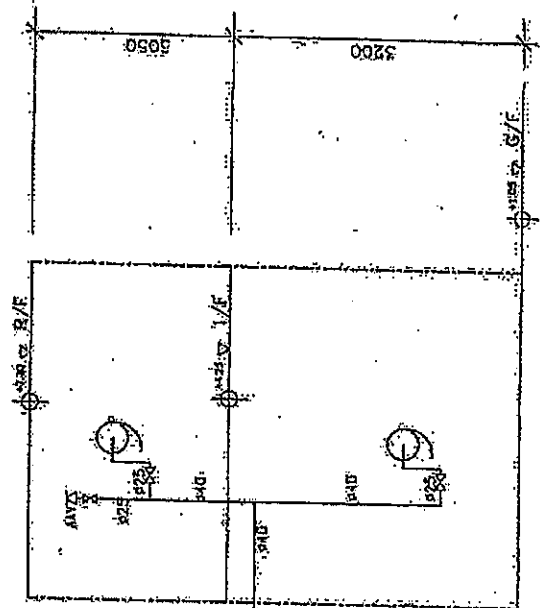
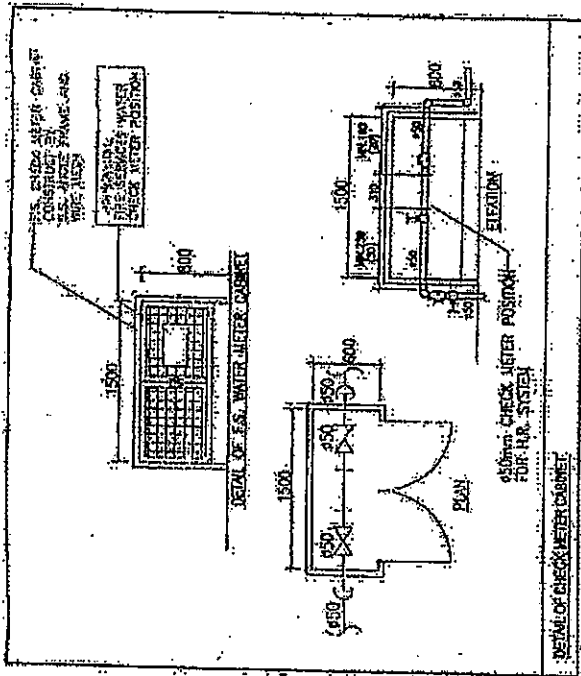
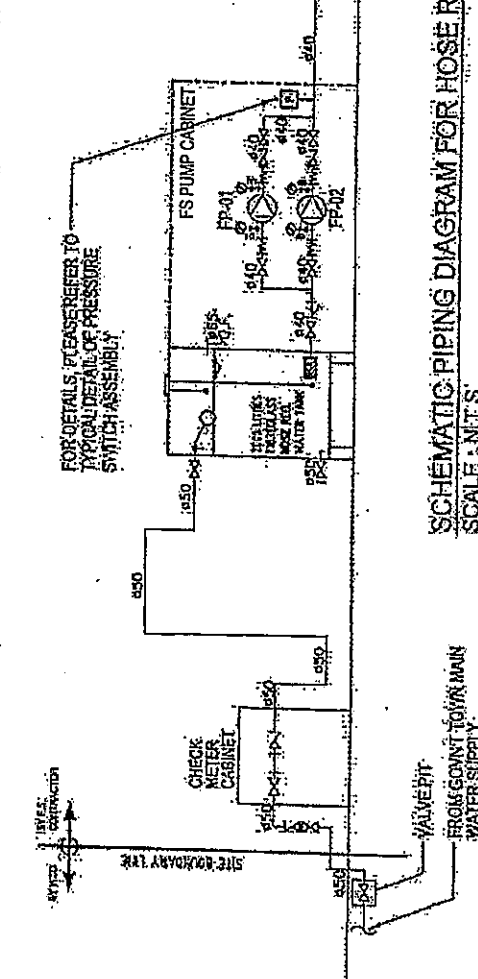
99. THE OPERATOR SHOULD ALWAYS WEAR PROTECTIVE GEAR AND FOLLOW THE SAFETY PROCEDURES.

100. THE OPERATOR SHOULD ALWAYS WEAR PROTECTIVE GEAR AND FOLLOW THE SAFETY PROCEDURES.

**DETAILS OF HOSE REEL OPERATION INSTRUCTIONS**

**FS PUMP SCHEDULE**

HOSE REEL PUMP FP-01 & FP-02	TYPE OF PUMP MULTI-STAGE VERTICAL-TYPE	FLOWRATE (L/min)	PRESSURE (bar)	MOTOR SPEED (RPM)	POWER RATING (kW)
		60	5	2800	1.5



SI CONTRACTOR: WING KAI

CLIENT: MISSION ARK LTD.

PROJECT: 元朗探洞丈量局 第104號地段 第4620號1樓 (關時社會福利設施藥物治療及康復中心)

TITLE: SCHEMATIC PIPING DIAGRAM FOR HOSE REEL SYSTEM

SCALE: 1:100

NO. REVISIONS DATE BY

R3	REVISED	06/2024	SCALE	NIS	JOB NO.:
R2	REVISED	12/2023	DRAWN:	CAD	WC230927
R1	REVISED	09/2023	CHECKED:	CK HO	DRAWING NO.:
NO.	REVISIONS	DATE	DATE	BY	FS-02

WING KAI ENGINEERING CO. LTD.  
 No. 8, 7/F., Kingford Industrial Centre,  
 13 Wing Lok Road, Kowloon, Hong Kong  
 Tel: 27561722 Fax: 27551775



WING KAI ENG. CO.  
 No. 8, 7/F., Kingford Industrial Centre,  
 13 Wong Tai Sin Road, Kowloon Bay, Kln  
 Tel: 27561722 Fax: 27561775

FSI CONTRACTOR:

CLIENT:

MISSION ARK LTD.

PROJECT:

元朗米道量物坊  
 第104梯地段 第4620號1樓  
 (關國寺社會福利院康樂活動室及康樂中心)

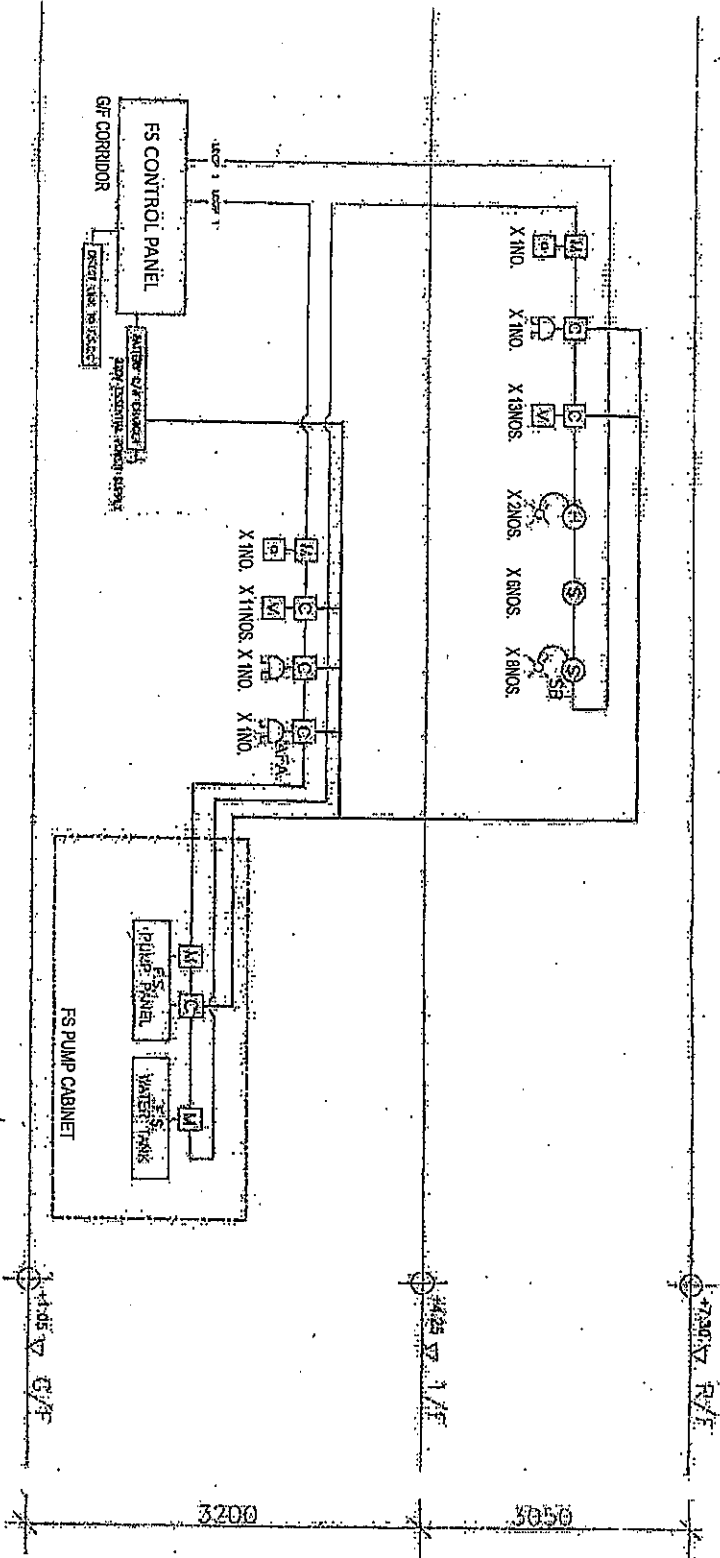
TITLE:

SCHEMATIC CONTROL WIRING DIAGRAM  
 FOR FIRE ALARM SYSTEM

R3	REVISED	06/2024	SCALE	NFS	JOB NO.:
R2	REVISED	12/2023	DRAWN:	CAD	WK230927
R1	REVISED	09/2023	CHECKED:	CK 110	DRAWING NO.:
NO.	REVISIONS	DATE	BY	DATE	FS-03



**SCHEMATIC CONTROL WIRING DIAGRAM FOR FIRE ALARM SYSTEM**  
**SCALE: N.T.S.**



7200V F/F

4425V 1/F

1445V G/F

3200

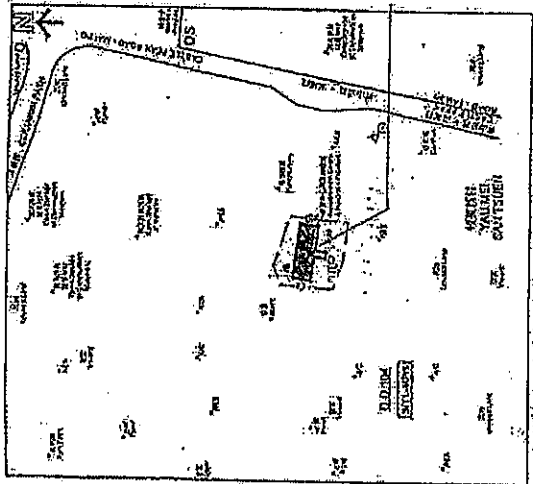
3050

# F.S. NOTES

- SPRINKLER SYSTEM**
- SINCE THE TOTAL AREAS OF THIS LICENSE APPLICATION IS NOT EXCEEDING 230 SQUARE METER, SPRINKLER SYSTEM SHALL NOT BE PROVIDED.
- FIRE ALARM SYSTEM**
- FIRE ALARM SYSTEM SHALL BE PROVIDED IN ACCORDANCE WITH BS 5839-1:2017 AND THE FSD CIRCULAR LETTER NO. 6/2021.
  - A MANUALLY OPERATED FIRE ALARM SYSTEM SHALL BE PROVIDED FOR LICENSE AREA OF ENTRANCE.
  - VISUAL FIRE ALARM SYSTEM
  - VISUAL FIRE ALARMS SHALL BE PROVIDED IN ACCORDANCE WITH BS 5839-1:2007, THE FSD CIRCULAR LETTER NO. 2/2012 AND FOLLOW THE DESIGN MANUAL: BARRIER FREE ACCESS 2008 PUBLISHED BY THE BUILDINGS DEPARTMENT.
  - VISUAL FIRE ALARM TO BE PROVIDED AND BE LOCATED AT A PROMINENT LOCATION IN PLACES WHICH ARE INTENDED TO BE ACCESSIBLE TO THE PUBLIC.
- HOSE REEL SYSTEM**
- HOSE REEL SYSTEM SHALL BE PROVIDED FOR WHOLE BUILDING.
  - THERE ARE SUFFICIENT HOSE REEL TO ENSURE THAT EVERY PART OF THE BUILDING CAN BE REACHED BY A LENGTH OF NOT MORE THAN 30M OF HOSE REEL TUBING.
  - HOSE REEL PUMPS (ON DUTY AND STANDBY) SHALL BE PROVIDED FOR HOSE REEL SYSTEM.
  - A 2000 LITERS HOSE REEL WATER TANK SHALL BE PROVIDED TO SERVE HOSE REEL SYSTEM.
- EXIT SIGN**
- SUFFICIENT EXIT SIGN AND DIRECTIONAL SIGN SHALL BE PROVIDED WITHIN THE LICENSE AREA TO ENSURE THAT ALL EXIT ROUTES AREA CLEARLY INDICATED AND COMPLY WITH BS 5266-1:2001B AND THE FSD CIRCULAR LETTER NO. 5/2008.
- EMERGENCY LIGHTING**
- EMERGENCY LIGHTING SHALL BE PROVIDED FOR THE LICENSE AREA IN ACCORDANCE WITH BS 5266-1:2016, BS EN 1838:2013 AND THE FSD CIRCULAR LETTER NO. 4/2021.
- POTABLE EQUIPMENT**
- PORTABLE FIRE EXTINGUISHERS SHALL BE PROVIDED AT E POSITION AS SHOWN ON PLANS.
- FIRE DETECTION SYSTEM**
- FIRE DETECTION SYSTEM SHALL BE PROVIDED IN ACCORDANCE WITH BS 5839-1:2017 AND THE FSD CIRCULAR LETTER NO. 6/2021.
  - SMOKE DETECTOR WITH SOUNDER BASE SHALL BE PROVIDED IN SLEEPING ACCOMMODATION OF LICENSE AREA.
  - THE DETECTOR SHALL BE OF FSD APPROVED TYPE.
  - ON MAIN FIRE ALARM CONTROL PANEL SHALL BE PROVIDED AS INDICATED ON PLANS TO RECEIVE ALL FIRE ALARM SIGNALS.
  - HEAT DETECTOR SHALL BE PROVIDED FOR LAVATORY AND SMOKE DETECTOR SHALL BE PROVIDED FOR LIVING ROOM AND CORRIDOR.
  - ALL FIRE ALARM SIGNALS INCLUDED FIRE DETECTORS, MANUAL FIRE ALARM CALL POINT SHALL BE LINKED TO FSD COMMUNICATION CENTRE VIA DIRECT LINE PROVIDED BY THE AUTHORIZED SERVICE PROVIDER OF THE COMPUTERIZED FIRE ALARM TRANSMISSION SYSTEM.

# LEGEND

- LICENSE AREA
- SMOKE DETECTOR
- SMOKE DETECTOR WITH SOUNDER BASE
- HEAT DETECTOR
- REMOTE INDICATION LAMP
- REMOTE INDICATION LAMP (WEATHER PROOF TYPE)
- VISUAL FIRE ALARM
- EMERGENCY LIGHTING WITH BACKUP BATTERY
- 5KG DRY POWDER FIRE EXTINGUISHER
- 9L WATER TYPE FIRE EXTINGUISHER
- 5KG CO2 GAS TYPE FIRE EXTINGUISHER
- EXIT SIGN BOX
- DIRECTIONAL SIGN BOX
- FIRE ALARM BELL
- MASTER FIRE ALARM BELL
- MONITOR MODULE
- FIRE HOSE REEL
- GATE VALVE
- CHECK VALVE
- FLEXIBLE CONNECTOR
- Y-TYPE STRAINER
- BALL FLOAT VALVE
- STRAINER
- CHECK METER POSITION



**BLOCK PLAN**

元朗樂達工業坊  
第104號地盤 第4620號1樓  
FIRST FLOOR, LOT 4620  
IN D.D. 104, MAI PO,  
YUEN LONG

# ABBREVIATION

WL	LOW LEVEL	F.E.	FIRE EXTINGUISHER
HIL	HIGH LEVEL	F.S.	FIRE SERVICES
FSD	FIRE SERVICES DEPARTMENT	S.S.	STAINLESS STEEL
WSD	WATER SUPPLIES DEPARTMENT	H.R.	HOSE REEL
COP	COSE OF PRACTICE	A.A.V.	AUTOMATIC AIR VENT
T/A	TO ABOVE		
T/B	TO BELOW		
F/A	FROM ABOVE		

# COLOUR CODE FOR PIPE SIZES:

PIPE SIZE	COLOUR CODE
25mm diameter	GREEN
40mm diameter	PURPLE
50mm diameter	YELLOW

- PRESSURE GAUGE
- BALL VALVE
- PRESSURE SWITCH
- AUTOMATIC AIR VENT
- LEVEL FLOAT SWITCH
- MANUAL FIRE ALARM CALL POINT
- F.S. CONTROL PANEL
- HOSE REEL PUMP
- CONTROL MODULE



SI CONTRACTOR: 	WING KAI ENG. CO. No. 8, 7/F., Kingford Industrial Centre, 13 Tung Chung Road, Kowloon Bay, Kln 1627557122 Fax:27551775	CLIENT: MISSION ARK LTD.	PROJECT: 元朗樂達工業坊 第104號地盤 第4620號1樓 (辦事處在會德軒藥物科學治療及康復中心)
	TITLE: F.S. NOTES, LEGEND, BLOCK PLAN, ABBREVIATION AND COLOUR CODE FOR PIPE SIZES		
R3 REVISIONS	06/2024 DATE	REVISIONS NO. DATE BY	SCALE: NTS JOB NO.: WK230927
R2 REVISIONS	17/2023 DATE	REVISIONS NO. DATE BY	DRAWING NO.: FS-01
R1 REVISIONS	09/2023 DATE	REVISIONS NO. DATE BY	CHECKED: CK HO DRAWING NO.: FS-01

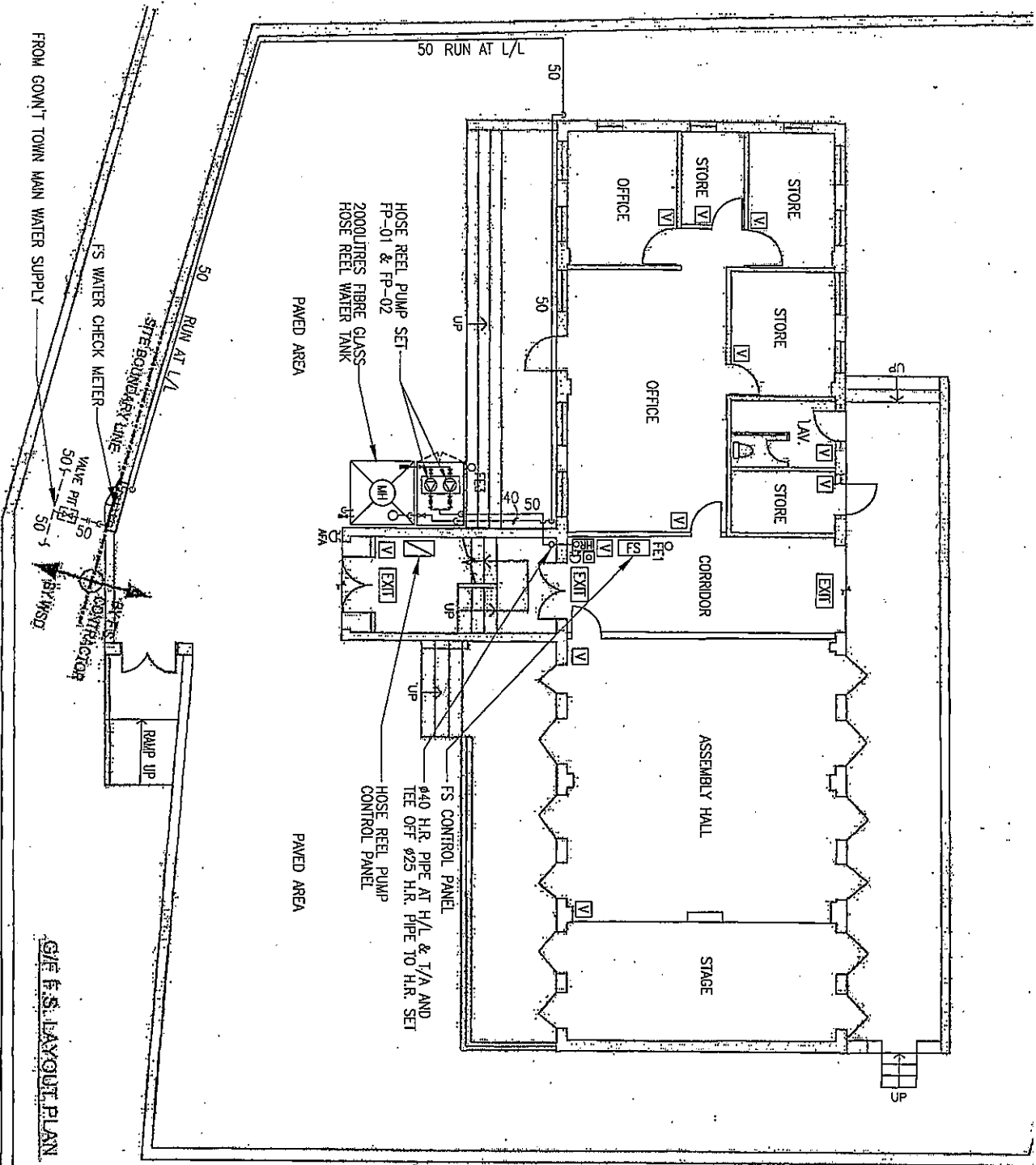


WING KAI ENG. CO.  
 No. 8, 7/F., Kingsford Industrial Centre,  
 13 Wong Ho Road, Kowloon Bay, Kln  
 Tel: 27561722 Fax: 27561775

MISSION ARK LTD.

元朗樂善堂總堂  
 第104號地盤 第4620號1樓  
 (國際社會福利服務發展諮詢及康復中心)

F.S. LAYOUT PLAN FOR FIRST FLOOR

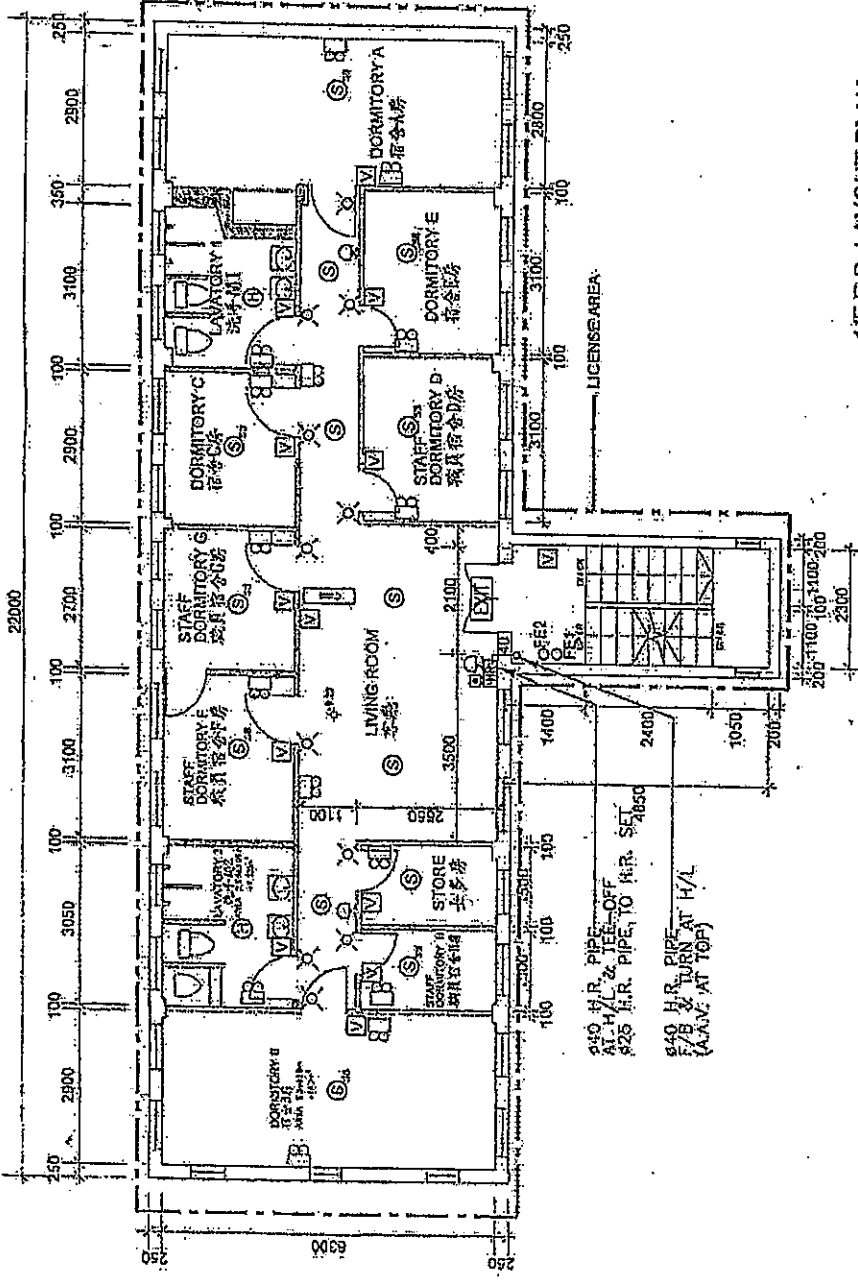


G/F F.S. LAYOUT PLAN



NO.	REVISIONS	DATE	BY	DATE	JOB NO.	DRAWING NO.
R3	REVISED	08/2024			WK230927	FS-04
R2	REVISED	12/2023				
R1	REVISED	09/2023				

FSI CONTRACTOR: CLIENT: PRODUCT: TITLE: SCALE: 1:100



**1/F F.S. LAYOUT PLAN**  
 TOTAL FLOOR AREA:  $(22m \times 6.36m) = 141.72m^2$   
 $= 149.755m^2$   
 CONCLUSION, TOTAL LICENSE FLOOR AREA IS  $149.755m^2$ , WHICH IS LESS THAN  $230m^2$ . THEREFORE NO SPRINKLER SYSTEM IS REQUIRED.

FSI CONTRACTOR: <b>FIRE PROTECTION</b> WING KAI	WING KAI ENG. CO. No. 8, 7/F., Keesford Industrial Centre, 13 Wong Hei Road, Kowloon Bay, Kln Tel: 27561722 Fax: 27351775		CLIENT: <b>MISSION ARK LTD.</b>		PROJECT: 元朗米埔丈量約份 第104約地段 第4620號1樓 (關聖社社會福利服務中心及康樂中心)		TITLE: <b>F.S. LAYOUT PLAN FOR FIRST FLOOR</b>		JOB NO.: WK230927		
	MISSION ARK LTD.		MISSION ARK LTD.		MISSION ARK LTD.		MISSION ARK LTD.		SCALE: 1:100	DATE: 06/2024	
	MISSION ARK LTD.		MISSION ARK LTD.		MISSION ARK LTD.		MISSION ARK LTD.		DRAWN: CAO	DATE: 12/2023	
	MISSION ARK LTD.		MISSION ARK LTD.		MISSION ARK LTD.		MISSION ARK LTD.		CHECKED: CK, HD	DATE: 09/2023	
MISSION ARK LTD.		MISSION ARK LTD.		MISSION ARK LTD.		MISSION ARK LTD.		NO.	REVISIONS	DATE	BY
MISSION ARK LTD.		MISSION ARK LTD.		MISSION ARK LTD.		MISSION ARK LTD.		R3	REVISED	06/2024	
MISSION ARK LTD.		MISSION ARK LTD.		MISSION ARK LTD.		MISSION ARK LTD.		R2	REVISED	12/2023	
MISSION ARK LTD.		MISSION ARK LTD.		MISSION ARK LTD.		MISSION ARK LTD.		R1	REVISED	09/2023	
MISSION ARK LTD.		MISSION ARK LTD.		MISSION ARK LTD.		MISSION ARK LTD.					